

**URTOPIA**

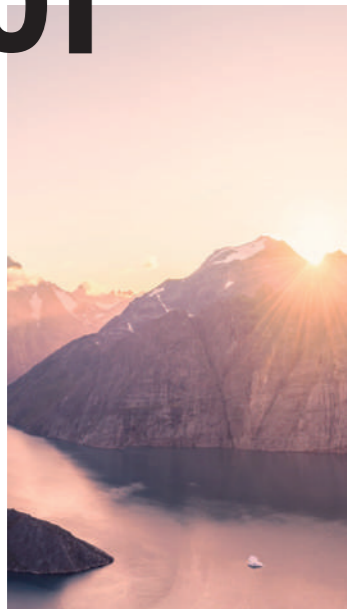


2023

URTOPIA E-BIKES

# Table of Contents

01



## Our Mission & Value

· Mission	04
· Value	05

02



## Carbon 1

· Intro	08
· Design	10
· Effortless	11
· Smartbar	12
· Specs	18
· Size Guides	19
· Which Style?	20

03



## Chord

· Intro	21
· Design	24
· Canvas	26
· Smart	27
· Motion	28
· Specs	29
· Size Guides	30

04



## Smart APP

· Smart App	32
-------------	----

05



## Accessories

· Accessories	35
---------------	----



## Why We Are Called Urtopia

Somewhere, at the center of your heart, there are unique elements of purity that you alone have been able to understand. That special place is where we meet you to trigger happy moments and great potential in you.

Urtopia strives to share a lifestyle of happiness, health and positivity. We prioritize the lifting of your overall well-being - your health, happiness, and unveiling of new potentials. All these are packaged within our resolve to provide you an excellent riding experience.

## Our Mission

We recognize the abundance of homogeneous e-bikes in the market. We're also in the best position to understand the attendant shortcomings that have accompanied these abundant products. Urtopia is a cut above all other brands.

Our mission is to create products that are devoid of all known shortfalls from other brands. We work to realize beautiful fantasies of e-bike lovers through the provision of smart bikes that are simple, beautiful and magical to use.

## Our Vision

Our values are mainly human centric. We wish that when you ride your Urtopia e-bikes, in addition to its physical comfort, they can bring you the needed spiritual resonance that will fill you with new agility to embrace the world and reach your dreams. We want to be that brand that helps people build their own utopia.

## Best-Selling E-Bike on Crowdfunding 2021-2022

We are 2021 Best Selling E-Bike on Indiegogo with \$3.5M raised. It's so gratifying to have so many backers who have supported us since the crowdfunding stage and have given us a lot of good suggestions and love. They are the pals who chose us from the very beginning, and we will continue to go forward with their trust.

# Towards a Healthy and Sustainable World



## The Future We Make

Sustaining a great harmony between man and nature requires some conscious human input. We all value good health and an environment that allows us to live freely and sustainably. Sadly, the real world often turns out to be the exact opposite of what we want it to be. For example, people follow fitness professionals on social media but can rarely remember correctly the last time they exercised with family and friends. We talk about carbon neutrality on twitter, but turn around and grab \$5/gallon gas. If the end story is a world where everyone is lazier, less healthy, and the environment is worse, we can't help but wonder if this is the future we want.

Urtopia wants a different future; a future where people and the environment can thrive together; a future where technology and humanity are more compatible. We embrace technological advances and

pursue a path that allows a perfect balance between human health and the protection of nature. With the help of technology, we redefine cycling so that anyone who is willing, regardless of height, weight, or physical fitness, can join in the movement and enjoy a healthy life together.

We aim to convert exercising into an enjoyable, desirable, and routine way of life for everyone. With the help of technology, we've redefined "green", by bringing the best operational efficiency and the most suitable exercise experience for ourselves through the organic integration of people, nature, and technology as a direct impact of our lowest carbon emission attainment. Urtopia's abundance of liberty helps us to pursue and accomplish our own utopia. We, therefore, invite you to join us in making the world greener.



# Carbon 1



## Sporty and Futuristic

Sporty, intelligent, and futuristic, Urtopia's core spirit doesn't stop at just a strong sense of aesthetics, but also incorporates state-of-the-art technologies. Unlike others that are heavy and old-fashioned, Urtopia strives to redefine what e-bikes can be.

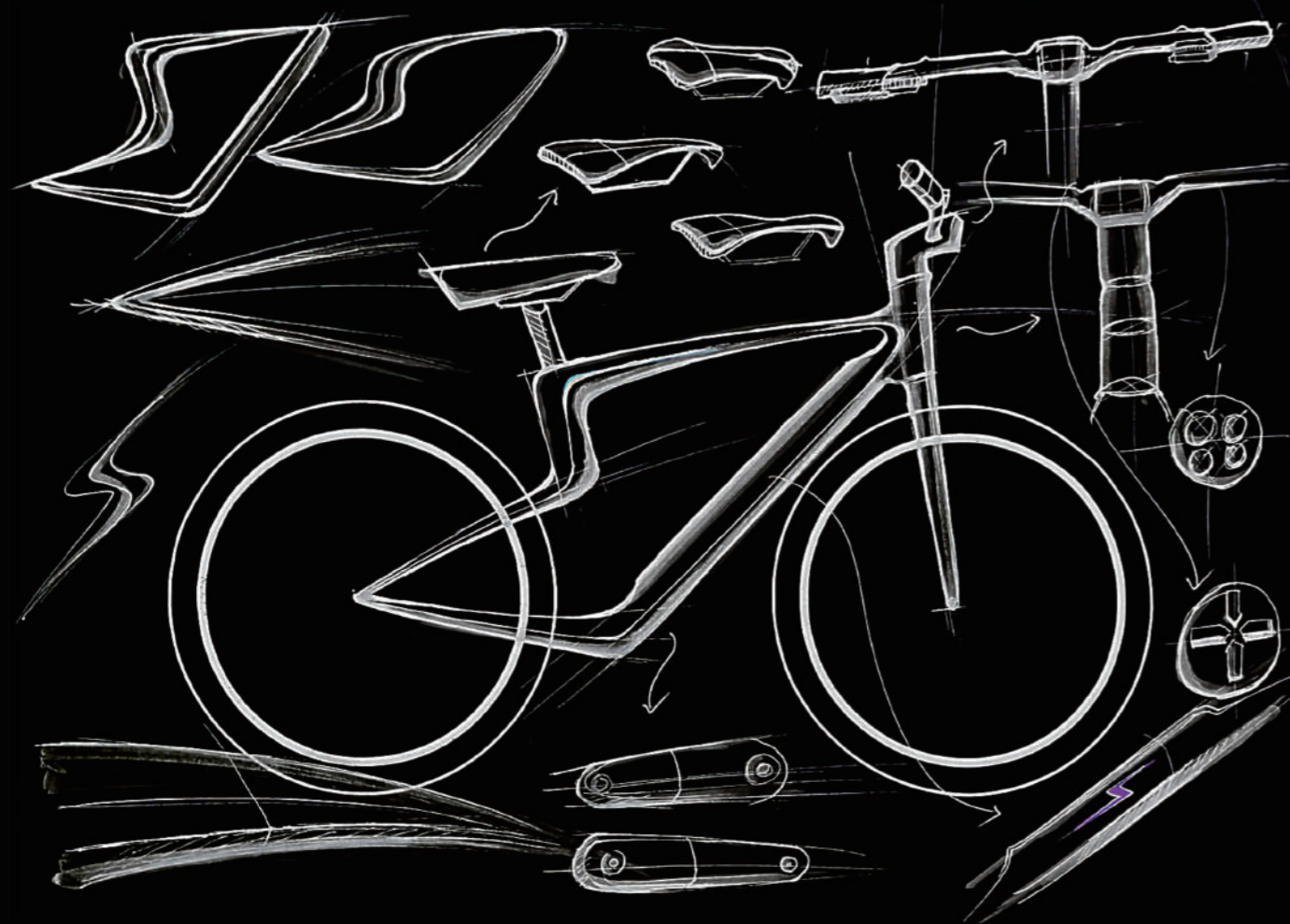




# Design is the Soul

## Design is where science and art break even

Formerly a designer for BMW and Siemens, and inspired by the Möbius strip, Mr. Heller built a stunning frame shape that symbolizes sustainability and interconnectedness.



# Effortless to Carry



## Full Carbon (Only 15 kg)

Literally, an e-bike single-handedly manageable. Just a fraction of the weight compared to peer e-bikes, thanks to a full carbon body of frame, handlebar, seat post, and forks.



# Smartbar

Technology changes the way people interact with the world, keeping us ever more connected. Urtopia's emphasis on connection and interaction has triggered our heavy investment in technology, and resulted in a tech wonder that we fondly call Smartbar.



## Built-in Navigation

You won't have to rely on your phone to navigate during the ride, the smartbar screen will show you the direction and distance, and there will be voice prompts to help you where you go.



## Fingerprint Unlock

Urtopia has deftly adapted a feature common on smartphones to provide maximum convenience whenever you hop on the e-bike. No more hassle worrying about losing another key.



## Anti-theft

Integrated GPS allows anti-theft function and real-time navigation, no need to stare down while riding. And you can find your bike by GPS tracking.



## Voice Control

Built on two noise-canceling mics and one 3W speaker and onboard AI algorithm, it offers customizable voice commands and horn beeps for fun interaction.



## LED Dot-Matrix Display

Easy-to-read display keeps you informed of speed, power, battery etc.



## Connectivity and OTA

Embedded 4G/eSIM, Bluetooth and Wi-Fi offer constant connection and Over-the-Air updates that ensure the bike stays up to date with newest features and improvements.





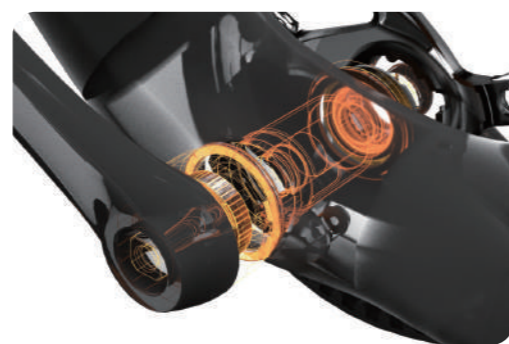


### Carbon Belt

Compared to metal chains, carbon belt is clean and virtually maintenance free, while providing a lifespan many times longer.

### Torque Sensor

Unlike jerky cadence sensing, proprietary torque sensor enables super-fast speed-adaption.



### Motor

Enough power to make you feel 10 years younger. Climbing up slopes is no longer a challenge but pure fun.

### Nimble Battery

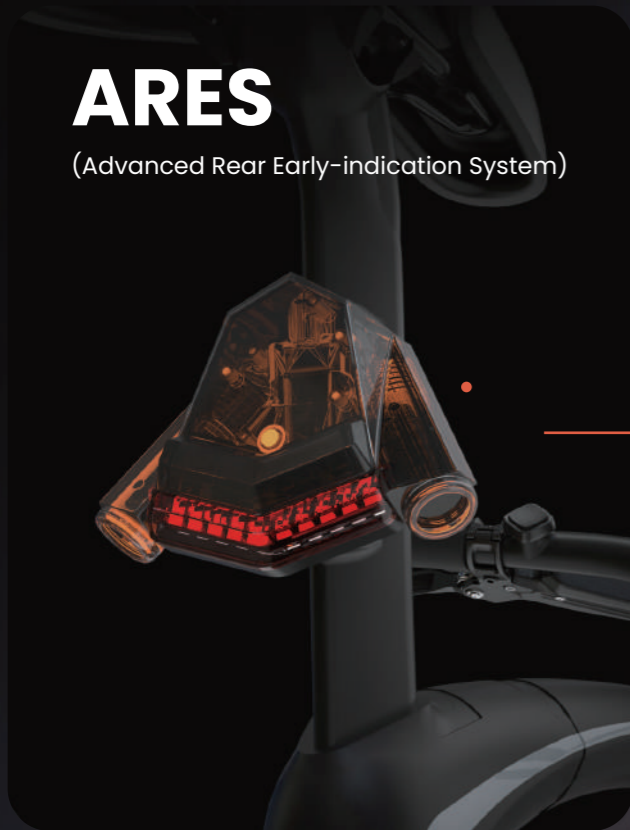
A 360Wh lithium-ion removable battery provides ample energy so a rider can travel up to 130km (50km min.) after a mere 2.5-hr charge.





# ARES

(Advanced Rear Early-indication System)



## Smart StVZO Headlight

Compliant with German Road Traffic Licensing Regulations, the ambient-light auto-controllable headlight can also be switched on and off via your voice, a Smartbar button, or the Urtopia app.

## Puncture-Resistant Tires

Offer fast-rolling and high-traction while also being resistant to punctures.

## Hydraulic Disc Brakes

Bring the bike to a stop effectively.

## Position Light



A bright red light warns drivers and riders of the Urtopia rider up front.

## Projection Lights



Each is a turn-indicator that casts a signal on the ground at a click of the rider.





# Specifications

## Smart

Smartbar features	Voice control, fingerprint unlock, LED dot-matrix display, haptic interaction
Connectivity	eSIM with 4G, Bluetooth & WiFi
IoT sensors	Accelerometer, gyroscope, torque sensor
App	iOS & Android

## General

Weight	15 kg (33 lbs.)
Load-bearing capacity	Max. 110 kg (240 lbs.)
Sizes	Small, Medium, Large
Body material	Carbon fiber (frame, fork, handlebar, seatpost)
Brakes	Front & rear dual-piston hydraulic disc
Transmission	Gates Carbon Drive™ CDN™ belt (up to 30,000 km)
Integrated lights	StVZO headlight; Advanced Rear Early-indication System (ARES)
Wheels	700C (ISO 622 mm BSD), inner rim 19 mm
Tires	Kenda Kwest 700 × 35C (35 mm / 1.4") (30-45 mm compatible)

## Motor

Customized motor	Customized rear hub, 36V*350W (US)/250W (EU), 35 N·m
Power modes	Pedal, Eco, Comfort, Sport, Turbo
Top speed (assisted)	20 mph (32 km/h), US version; 16 mph (25 km/h), EU version

## Removable Battery

Capacity	352.8 Wh
Cell	Samsung Li-ion

## Range

Eco mode	Up to 100 km / 62 miles
Comfort mode	Up to 80 km / 37 miles
Sport mode	Up to 50 km / 25 miles

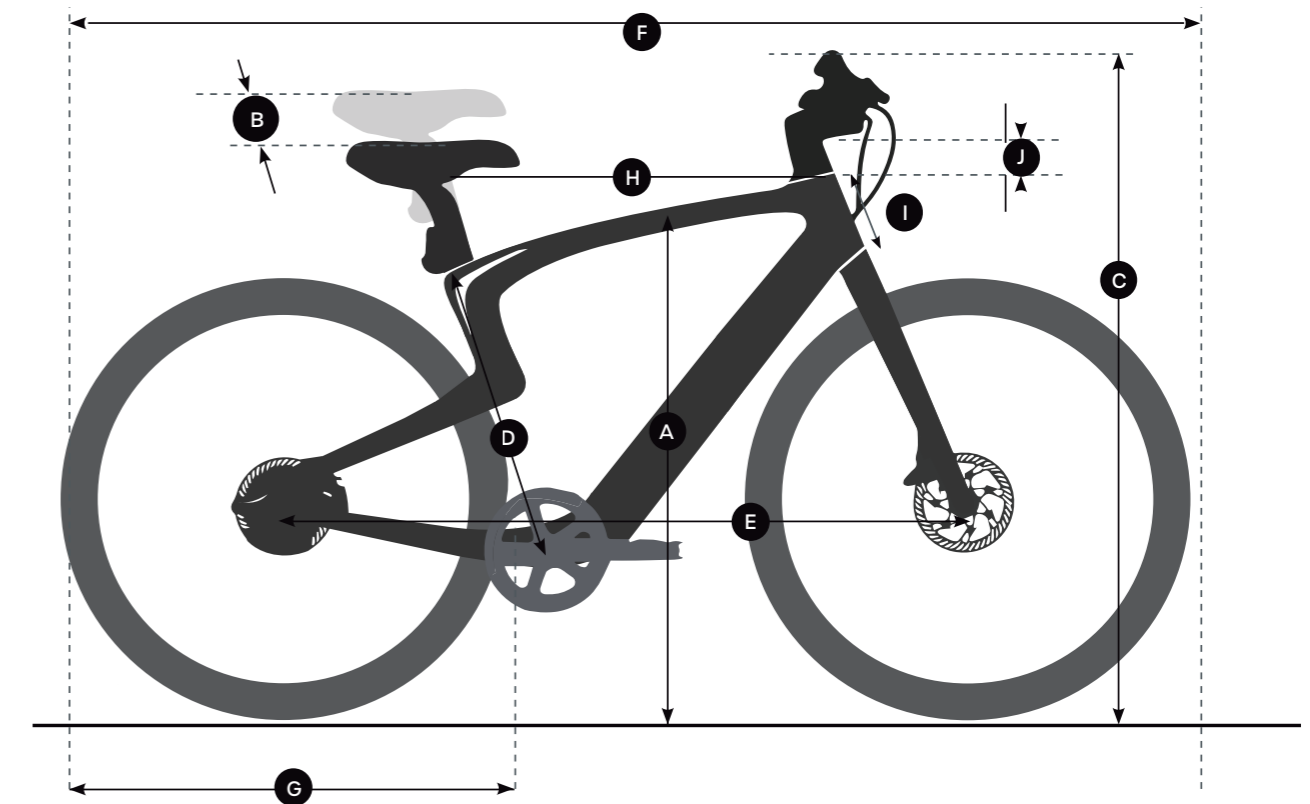
## Sizes

Small	160-175 cm (5'3"--5'9")
Medium	170-185 cm (5'7"--6'1")
Large	180-195 cm (5'11"--6'5")

## Charger

Charging time	2.5 hrs quick charge
Input Voltage	100-240 V AC
Rated Output Voltage	42 V DC
Rated Charge Current	4 A

# Size Guide



Size	Small	Medium	Large
A. Standover height	760 mm	800 mm	840 mm
B. Adjustable seat range	50 mm	60 mm	60 mm
C. Handlebar grips height	1000 mm	1010 mm	1020 mm
D. Seat tube length	420 mm	460 mm	500 mm
E. Wheelbase	1060 mm	1080 mm	1120 mm
F. Overall length	1790 mm	1810 mm	1850 mm
G. Wheel diameter	690 mm	690 mm	690 mm
H. Top tube length (effective)	550 mm	580 mm	610 mm
I. Head tube length	160 mm	170 mm	180 mm
J. Headset height	100 mm	100 mm	100 mm



## Which Style Is Yours?



### **SIRIUS**

As the brightest star in the night sky, Sirius is a binary star system comprised of two white stars orbiting each other.



### **LYRA**

Fluid line smooth and soft with its body, temper force with grace. Lyra's unique body lines project a sense of elegance.



### **MIDNIGHT IN PARIS**

With vivid color and clear lines, Midnight in Paris makes a great companion on a romantic night out.



### **VANILLA**

The rainbow gradient lines now start to invoke your fondly cherished memory of a vanilla ice cream dotted with colorful sprinkles.

**In Tune with Your Ride**



# Chord



## No One Knows It's Electric

Introducing Chord ebike, a fusion of art and technology inspired by the piano. Its unique design, smooth ride, and smart features make it the perfect vehicle for navigating the city with ease. With Chord, experience the ultimate blend of style and innovation.

## Chord

Fit for 170cm - 195cm



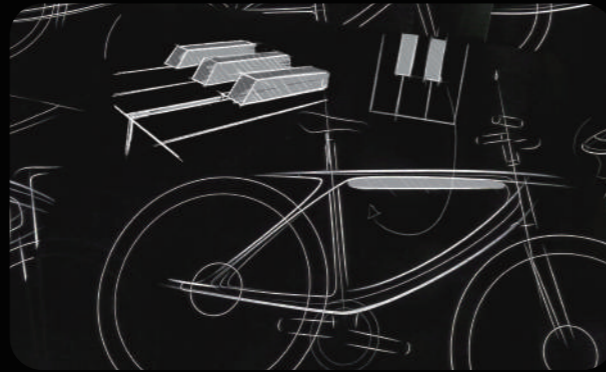
## Chord X

Fit for 160cm - 185cm





# Inspired from the Piano



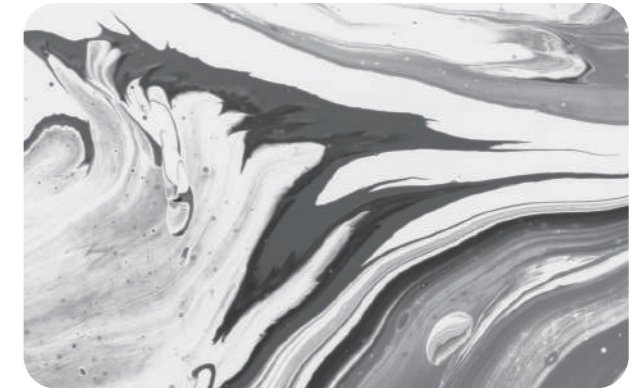
## Why

The piano, with its elegant curves and simple color palette, perfectly embodies the vision we had for Chord. We wanted an e-bike that would seamlessly blend into the city landscape, yet still stand out as a stunning work of art. So, Chord was born.



## Who Maksim Mrvica

Who personifies our philosophy for Chord? The famed Croatian pianist Maksim Mrvica was the answer. His passionate soul is perfectly aligned with the spirit in Chord, sparking our inspiration. He was like a soulmate for our design concept.



## How Liquid Forging

It offers four main advantages: seamless connected shapes, endless possibilities for design, high product density, and superior strength with cast-like accuracy.



# A Splash of Personality

## Your Own Canvas

To make your Chord a bit extra unique, the battery case—resembling a black key on a piano, is now your canvas. Use your imagination to your heart's content and DIY your own sticker, as well as selecting from a range of existing ones. Why not be an artist? It's your moment to show your talent.



# Smart is the New Sexy

## Voice Control

Customizable voice commands and horn beeps for fun interaction.

## Fingerprint Unlock

An efficient and intuitive option for riding without the hassle of carrying a key.

## Built-in Navigation

Goodbye, phone! No more struggling to navigate with a tiny screen.

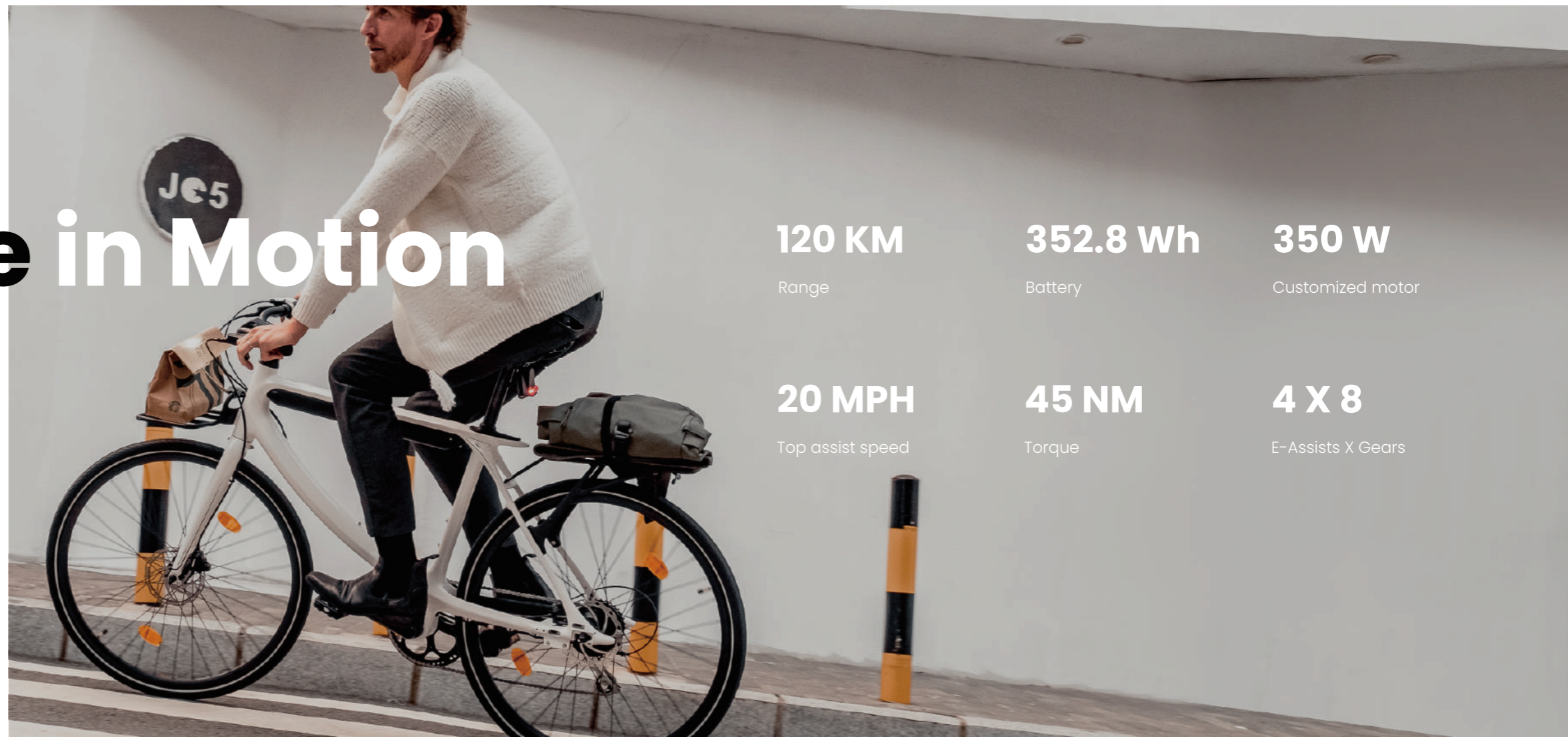
## Bluetooth Music

Like having a personal DJ wherever you ride.



# Elegance in Motion

The smooth shifting from speed to speed all but melts away sensory boundaries - allowing for a thrilling but smooth ride.



**120 KM**

Range

**352.8 Wh**

Battery

**350 W**

Customized motor

**20 MPH**

Top assist speed

**45 NM**

Torque

**4 X 8**

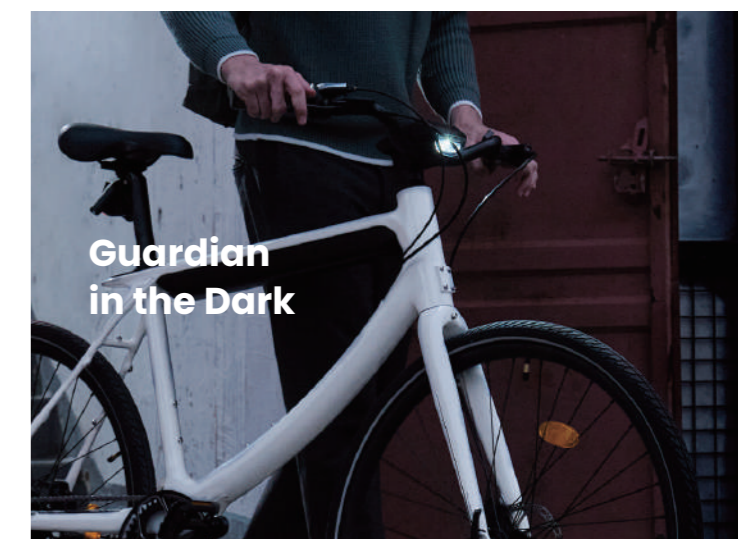
E-Assists X Gears



**Removable  
Battery**



**Effortless  
to Carry  
(21kg)**



**Guardian  
in the Dark**

# Specifications

## Smart

Smartbar features	Voice control, fingerprint start, LED dot-matrix display, haptic interaction, bluetooth music, built-in navigation, GPS tracking, OTA upgrade
Connectivity	eSIM with 4G, Bluetooth
IoT sensors	Accelerometer, gyroscope, torque sensor
App	iOS & Android

## General

Frame	6061 aluminum with liquid forging technology
Weight	21 kg (46 lbs)
Load-bearing capacity	Max. 130 kg (287 lbs.)
Brakes	Tektro hydraulic disc brakes
Gearing	8-Speed Shimano rear derailleur
Integrated lights	StVZO headlight;
Wheels	700C (ISO 622 mm BSD), inner rim 19 mm
Tires	CST C1720, 700 x 42C with reflective strips
Kickstand	Included, rear mount
Fenders	Included, front and rear mount
Rearlight	Included, StVZO rearlight

## Sizes

Chord (Step over)	170-195 cm (5'7"--6'5")
Chord X (Step-through)	160-185 cm (5'3"--6'1")

## Motor

Customized motor	Customized rear hub, 36V*350W (US)/250W (EU), 45 N·m
Power modes	Pedal, Eco, Comfort, Sport, Turbo
Top speed (assisted)	20 mph (32 km/h), US version; 16 mph (25 km/h), EU version

## Range

Eco mode	Up to 120 km/ 75 miles
Comfort mode	Up to 70 km/ 44 miles
Sport mode	Up to 50 km/ 31 miles

## Battery

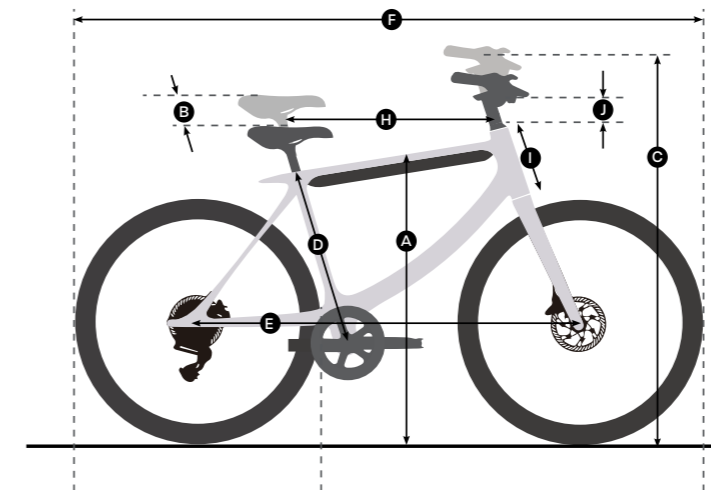
Capacity	352.8 Wh
Cell	Samsung Li-ion
Weight	2.22 kg (4.9 lbs)

## Charger

Charging time	3 hrs quick charge
Input voltage	100-240V
Rated Output Voltage	41.7V
Rated Charge Current	4A

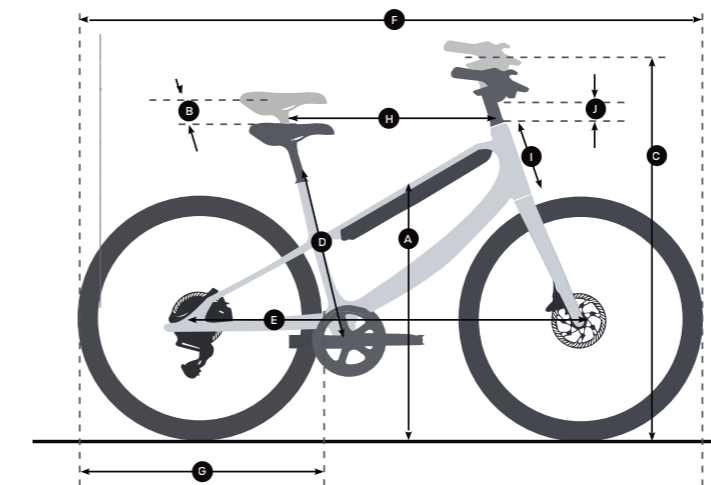
# Size Guide

## Chord



A. Standover height	810 mm
B. Adjustable seat range	100 mm
C. Handlebar grips height	1100-1130 mm
D. Seat tube length	500 mm
E. Wheelbase	1094 mm
F. Overall length	1800 mm
G. Wheel diameter	700 mm
H. Top tube length (effective)	620 mm
I. Head tube length	200 mm
J. Headset height	90-120 mm

## Chord X



A. Standover height	670 mm
B. Adjustable seat range	80 mm
C. Handlebar grips height	1100-1130 mm
D. Seat tube length	327 mm
E. Wheelbase	1094 mm
F. Overall length	1800 mm
G. Wheel diameter	700 mm
H. Top tube length (effective)	620 mm
I. Head tube length	200 mm
J. Headset height	90-120 mm



# Smart App

Based on riding data collected from multiple sources, there are journey playback, anti-theft tracking, badge awards, auto-navigation...and so many other unique features waiting for you to unlock in the Urtopia app.



"My Profile" is the central control of your home in the Urtopia app. It presents a dashboard where you can get a bird's-eye view of your personal data and have access to all sub-sections.

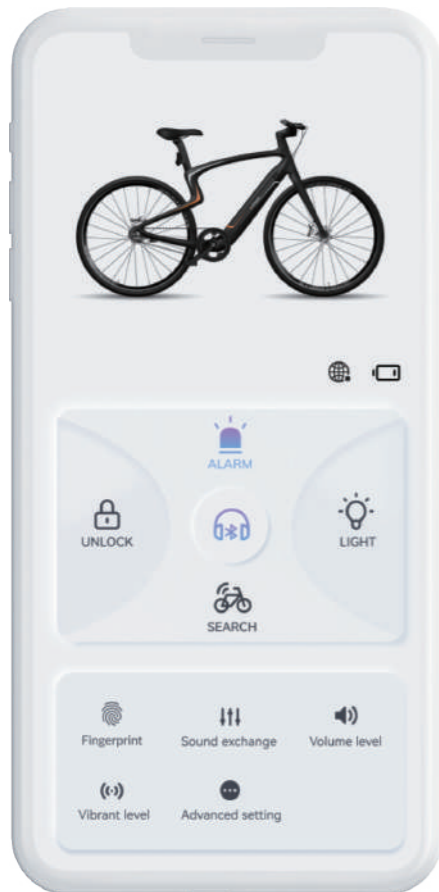
## CO2 Saved

E-bikes are one of the most environmentally friendly ways of traveling. In the CO2 Saved section, the more you ride, the more you contribute to a greener earth.



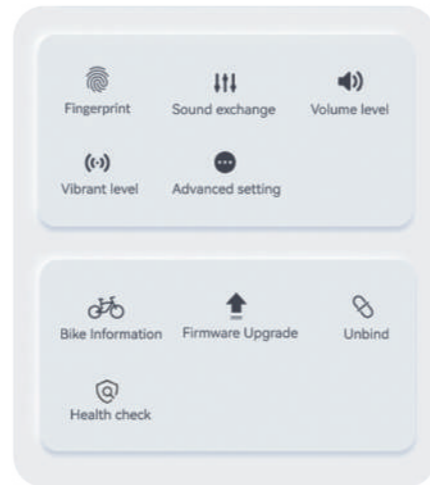
## Routes

Routes track each of your rides' geodata as well as other metrics. Each route can be played back to remind you of that happy moment whenever you want.



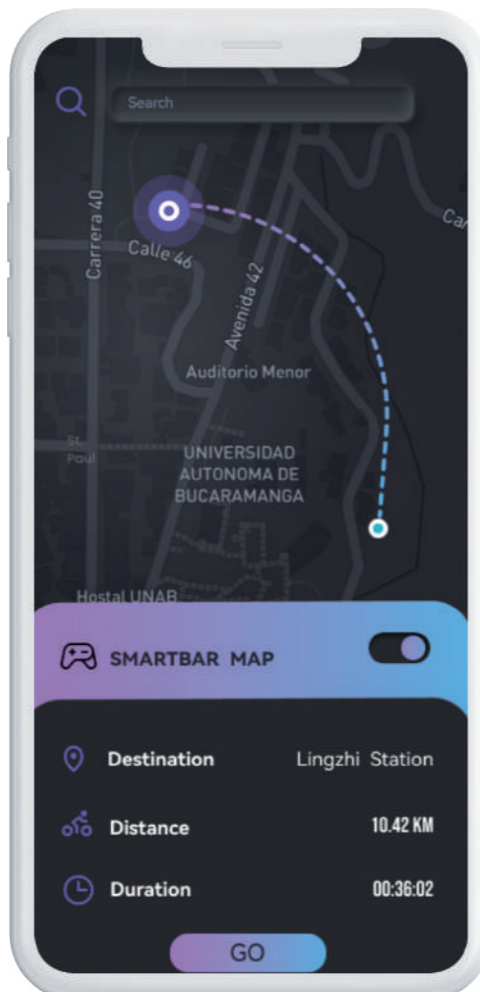
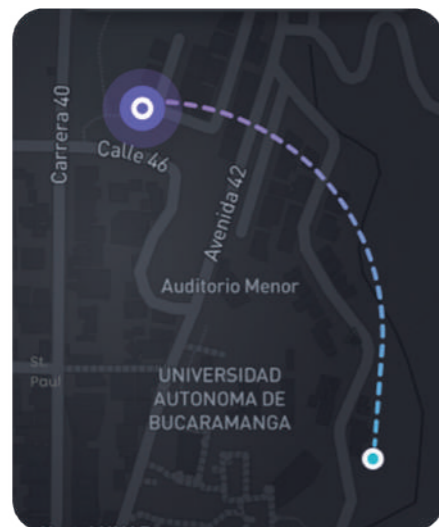
## Interacting with the Smartbar

Comprehensive and easy to use: the Smartbar interaction feature of the app allows you to do things like remote controlling your e-bike, changing sound volume and sound effects, interacting the firmware.



## GPS Tracking & Navigation

Aided by a constant 4G connection from onboard eSIM, GPS tracking keeps you informed of the e-bike's position, even in the worst scenario of theft.



## Accessories



### Front rack - Chord

- Exclusively designed for the Urtopia Chord and Chord X.
- Load capacity: 6 kg
- Mounting accessories included.
- Outside dimensions: 270 x 229.8 x 81.2 mm.



### Rear rack - Chord

- Exclusively designed for the Urtopia Chord.
- Beautifully crafted from strong, lightweight aluminum for a lifetime of use.
- Load capacity: 12 kg
- Mounting accessories included.
- Outside dimensions: 362 x 110 x 223.5mm.



### ARES Lights

- ARES (Advanced Rear Early-indication System) enhances riding safety
- A bright red position light
- A pair of projection lights indicates turning directions to warn off nearby vehicles



### Fenders

- Exclusively designed for the Urtopia Carbon 1/1s e-bike (not for S-sized bikes)
- Extend the elegant design while protecting against splashes
- Mounting accessories included



### Rear rack

- Exclusively designed for the Urtopia Carbon 1/1s e-bike
- Mounting accessories included
- Load capacity: 15 kg





### Kickstand

- Length: 340 mm
- Attaches to the left chainstay near rear hub
- Mounting accessories included



### Water Bottle Cage

- Weight: 20 g
- Material: 6061 aluminum alloy, black anodized
- Attaches to the bottom end of the seat tube
- Mounting accessories included



### Extra-Comfort Saddle

- Dimensions: 260 mm × 200 mm × 70 mm
- Concealed dual-spring mechanism
- Mechanical shock absorption



### Micro Fender

- Exclusively designed for the Urtopia carbon e-bike
- Extend the elegant design while protecting against splashes
- Mounting accessories included



### Battery

- 360 Wh Samsung Li-ion removable
- 2.5-hr quick charge
- Range: 30-80 miles (50-130 km)
- Weight: 2.8 kg
- Down tube battery replacement



### One-Year eSIM Service

- Active eSIM service is required for 4G connection outdoors
- It's required for many advanced smart functions such as activity tracking, AI voice control, movement alert and OTA update.

## Media Reviews

### Forbes

"The tech features worked great with the exception of the voice controls. It's a game changer in terms of safety."



"This e-bike does phone tech better than some phone."



"I'd argue the Urtopia would be worth its price on the weight and ride quality alone."



"This is possibly the most technologically advanced model you'll see this year."



"Urtopia ist das mit seinem E-Bike aber geradezu spielend gelungen."



"It's pure curves and racing lines. It's incredibly fun to ride."

# Ambass Reviews

Feel the Love From Celebrities and Athletes



NBA Hall of Fame  
**Tracy McGrady**



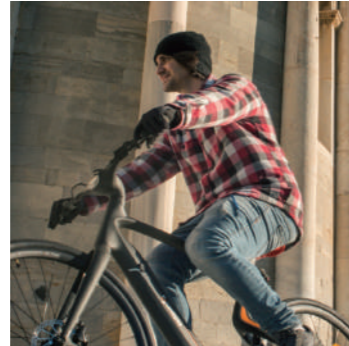
Classical Crossover Pianist  
**Maksim Mrvica**



Choice Award for Favorite Band  
**Smash Mouth**



Best Jewelers in the World  
**Ben Baller**

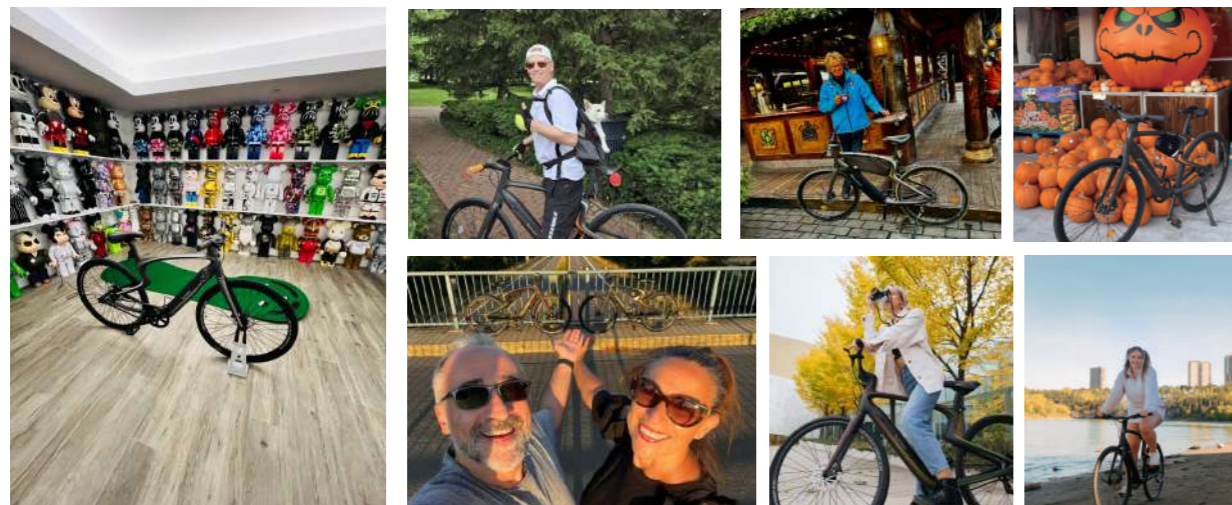


3x Italian BMX Champion  
**Alessandro Barbero**



5x German Triathlon Champion  
**Franz Loeschke**

# Urtopians Around the World



# After-Sales Service Worldwide

We have over 50 authorized repair shops across major cities in Germany and America to provide reliable after-sales service for our e-bikes. Our repair partners are experts in their field and have been carefully selected and trained to provide you with quality products and services.

Simply visit one of our authorized repair shops for repairs or maintenance. We're committed to ensuring that you have a positive experience with our e-bikes.





# URTOPIA

---

**New Urtopia Holdings HK Ltd.**

9/F, Block B, Chung Mei Centre, 15-17 Hing Yip Street, Kowloon, HK

**Volantur Interactive GmbH**

Rudower Chaussee 52, 12489 Berlin

**New Urtopia USA LLC**

1013 Centre Rd, Wilmington, DE 19805

**US Service Center**

1010 E Ave J, Suite 100, Grand Prairie, TX 75050

**EU Service Center**

Otto-Hahn-Str. 5-7, 63225 Langen (Hessen), Germany

 [info@newurtopia.com](mailto:info@newurtopia.com)

 [UrtopiaEbike](#)

 [newurtopia](#)

 [newurtopia](#)

 [Urtopia — New Urban Utopia](#)



Scan the QR code  
to visit our website